

# BIG IDEAS *for* VICTORIA'S FUTURE

Tell us how we can shape the future of Victoria together



We have travelled across Victoria asking some big questions about the future.

We've collected over 9,000 pieces of feedback, and had more than 850 hours of conversation with community, councils and stakeholders. This document provides you with a summary of the ideas shared by Victorians that we need your feedback on.

We've heard that Victorians want a future that is inclusive and vibrant - where everyone can have a place to call home with good connections to jobs, schools and services. These things will help us to create vibrant and safe communities where everyone can thrive.

Your feedback has helped to identify eight Big Ideas to transform Victoria. These Big Ideas will create a future that is liveable, sustainable and enriching - a future where Victorians feel healthy, empowered, safe and happy.

## Share *your* feedback on our Big Ideas.

Victorians have suggested the following Big Ideas and we need your feedback on the best way to deliver them. Let's create our future together.



**More homes in locations with great public transport access**



**More housing options for all Victorians including social and affordable homes**



**More jobs and opportunities closer to where you live**



**More options for how we move from place to place**



**More certainty and guidance on how places will change over time**



**More trees and urban greening in our parks and community spaces**



**More protections from flooding, bushfire and climate hazards**



**Greater protection of our agricultural land**

## Top priorities for Victorians

What you have told us so far:

- 1 Leafy green streets with trees, parks and open space
- 2 Better public transport, walking and cycling connectivity
- 3 Affordable homes for everyone
- 4 Protecting the valuable land where our food is grown
- 5 Vibrant and social places for people to connect and thrive



Tell us what you think about these Big Ideas on Engage Victoria.



# AFFORDABLE HOUSING *and* CHOICE

Providing all Victorians with a choice of a well-designed home, at an affordable price and close to daily needs.



## What we've heard so far

You've told us that we need more homes across Victoria. Many people have also told us that housing and renting choices are being significantly impacted by the cost of living and that more social and affordable homes are needed. In regional Victoria, we heard that there is a need for more new homes in a range of different styles to suit people's needs across all stages of life.

"We need more diverse housing - no more sprawling, neighbourhoods full of the same homes! We need a mix of homes that are walkable to shops, playground, schools."

"Protect renters against rapidly rising rents and housing instability."

"We need to build a lot more houses, especially affordable and social housing."



## Top seven factors when choosing a place to live

- Access to public transport
- Access to employment
- Affordability
- Access to green spaces
- How attractive the area is
- Being close to family and friends
- Access to hospitals and other health facilities

## Where you want to see new homes built





# BIG IDEAS

## • More homes in locations with great public transport access

We will need 2.24 million more homes by 2051 – 1.8 million in metropolitan Melbourne and 425,600 across regional Victoria. Making sure that new homes are built across the state and are well-located will allow us to maximise use of existing infrastructure and transport. When a new plan for Victoria is finalised, housing targets will show where new homes will be built across Victoria.



What do you think we should do to prioritise homes close to public transport, services and shops?



Where would you like to see more homes in your local area?

## • More housing options for all Victorians including social and affordable homes

We need to build more social and affordable homes so that more Victorians have access to housing that is safe, secure and suits their needs across all life stages.

There are many ways to provide more social and affordable homes for Victorians – everyone has a role to play.



How do you think a plan for Victoria could help to increase the amount of social and affordable homes?

## What could the plan for Victoria do?

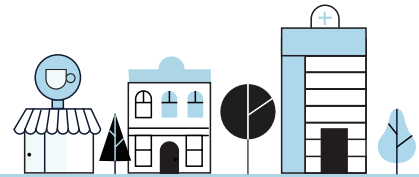
A new plan for Victoria could:

- Provide clear guidance about where more homes will go, including around transport hubs and closer to regional towns.
- Implement a minimum amount of social and affordable housing in new developments.
- Update regulations to improve the design quality of apartments, including consideration for climate resilient design.
- Make it easier and faster to assess permits for residential development that meet good design code.
- Require fewer car spaces for developments close to public transport to reduce costs and make homes more affordable.

Learn more about housing targets and tell us what you think of these Big Ideas and possible actions by scanning the QR code below.



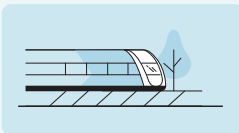
Enabling all Victorians to have access to jobs, schools, healthcare and shops so that they can lead prosperous lives.



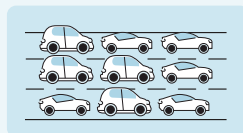
## What we've heard so far

Victorians have overwhelmingly told us that better public transport options are needed, although our feedback surveys indicate that most people are still using private cars to travel to work, school and other daily activities. We've heard that many people are spending too long on their daily commutes, with strong support for reduced congestion, better walking and cycling paths and more affordable homes close to places of work.

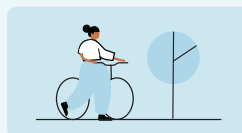
### Top five improvements that would make it easier for Victorians to get to work



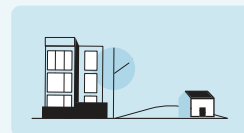
Better public transport options



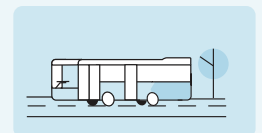
Less road congestion



Better bike and walking paths

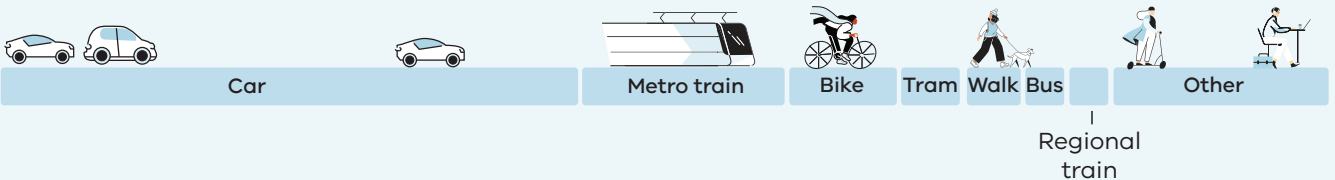


Affordable housing closer to work



Better road network

### Most common mode of transport to travel to work, school or other regular activities





# BIG IDEAS

## • More jobs and opportunities closer to where you live

Our cities and towns function best when we have a clear idea of where everything should go - including identifying and protecting land where jobs and industry are the main focus. We want to support productivity and make sure Victorians can access jobs that best match their needs and qualifications, in a convenient location.



**How can we protect land for employment so that we can improve access to jobs and services?**

## • More options for how we move around from place to place

As our population grows, we want to leave traffic congestion behind and encourage more walking, cycling and public transport to make places more liveable. In less built up areas we know that the car will still play an important role.

By maintaining good public transport access and making it easier for Victorians to walk, scooter or cycle more often, there will be more choices for how we get around.



**In what ways can we enhance public transport options and make walking and cycling more attractive, and how can we change behaviours around car dependency?**

## What could the plan for Victoria do?

A new plan for Victoria could:

- Create more transport connections that people can conveniently access, as they move from place to place.
- Improve the bus network to enhance reliability, safety and connectivity to key destinations.
- Ensure that there is enough land for employment uses close to where people live.

**Scan the QR code to visit Engage Victoria and tell us what you think of these Big Ideas and possible actions.**



# THRIVING *and* LIVEABLE SUBURBS AND TOWNS

Creating connected, well-designed,  
vibrant and inclusive communities for  
everyone to call home.



## What we've heard so far

Communities across Victoria want to maintain their local sense of place and identity. Vibrant places with green parks, diverse shops and local community facilities are important to most Victorians. When planning for new development, sustainability, planting of trees, and high-quality public parks and play spaces are amongst the most important priorities.

### Your ideas for thriving and liveable places

#### Transport

- Faster and more frequent bus and train services
- Better connections between public transport modes or different kinds of transport

#### Reduce congestion

- Better active and public transport to reduce car reliance
- Changes to traffic management
- Road maintenance

#### Open and green spaces

- More recreation spaces
- More street trees for cooling and inviting places
- Improvements to parks and open space facilities

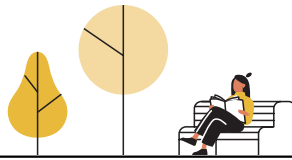
#### Active transport

- Ability to walk to local places
- Bike paths and safety updates
- Better connections between cycling and public transport

#### Healthcare

- Better support healthcare workers
- Improve access to healthcare
- Adequate mental health services





# BIG IDEAS

## • More certainty and guidance on how places will change over time

Victoria is a diverse network of communities and neighbourhoods. A 'one size fits all approach' to planning does not reflect the distinctiveness and local characteristics that make places unique such as public spaces and parks. If we carefully plan now, we can strike the right balance between maintaining local identity while providing more certainty and consistency about how change is managed.



?

**How do you think we can give communities more certainty for how places will change over time?**

## • More trees and urban greening in our parks and community spaces

Our places are getting hotter and drier, and this makes them less enjoyable and affects our health and wellbeing. More urban greening and tree planting in our parks and community spaces is key to ensuring places remain cool and green, particularly in locations that are less leafy. By introducing targets for tree canopy coverage, we can make our streets cooler and greener.



?

**What are your thoughts on setting targets to increase tree canopy in our public spaces? What considerations do we need to take into account?**

## What could the plan for Victoria do?

A new plan for Victoria could:

- Create a map that shows how places will grow or change over time.
- Ensure developers provide local community infrastructure alongside new housing.
- Better coordinate new development with the delivery of infrastructure.
- Introduce a minimum standard to guide the delivery of quality public open and community spaces for everyone to enjoy.
- Set targets to increase tree canopy coverage.

**Scan the QR code to visit Engage Victoria and tell us what you think of these Big Ideas and possible actions.**



# SUSTAINABLE ENVIRONMENTS *and* CLIMATE ACTION

Protecting our environment, agricultural land and natural resources for a sustainable and healthy future.



## What we've heard so far

Living more sustainably, reducing our carbon emissions, and protecting our agricultural land and natural environment are key priorities for many Victorians. To help create more sustainable places in the future, improving access to public transport, planting more trees and preserving our natural habitats are amongst the most important factors for Victorians.

### Top factors that would help households to contribute to a more sustainable environment



### Top five factors to help live a more sustainable lifestyle

-  Better connected public transport
-  More trees in urban areas
-  Protecting existing bush, forest and river systems
-  More public transport options
-  Pedestrian friendly urban centres





# BIG IDEAS

## • More protections from flooding, bushfire and climate hazards

We need to develop a clear understanding of the impacts of flooding and bushfire in order to plan for a more sustainable future. This will mean in some locations we need to adjust our expectations around what level of development is appropriate to ensure the right balance between community safety, mitigation of hazard impacts and protection of our natural environments.



**How can we balance development needs with the protection of areas prone to flooding and bushfire hazards?**

## • Greater protection of our agricultural land

Victoria has some of the best quality agricultural areas in Australia and grows a diverse range of food for ourselves and for export. We need to protect our agricultural land from urban expansion, climate change, natural disasters and resource scarcity. We can do this by establishing township boundaries to create a clear edge between housing and agricultural land. This will ensure we can live sustainably.



**How can township boundaries protect agricultural land? What considerations should be taken into account?**

## What could the plan for Victoria do?

A new plan for Victoria could:

- Consider how we ensure communities have the best available information, mapping and data, to inform decision-making around flooding, coastal hazards and bushfires.
- Adopt a state-wide approach to improve the design and environmental sustainability of all residential development.
- Develop a map to show and better define land uses in regional areas, including agricultural land.
- Establish township boundaries to protect agricultural land.

**Scan the QR code to visit Engage Victoria and tell us what you think of these Big Ideas and possible actions.**

